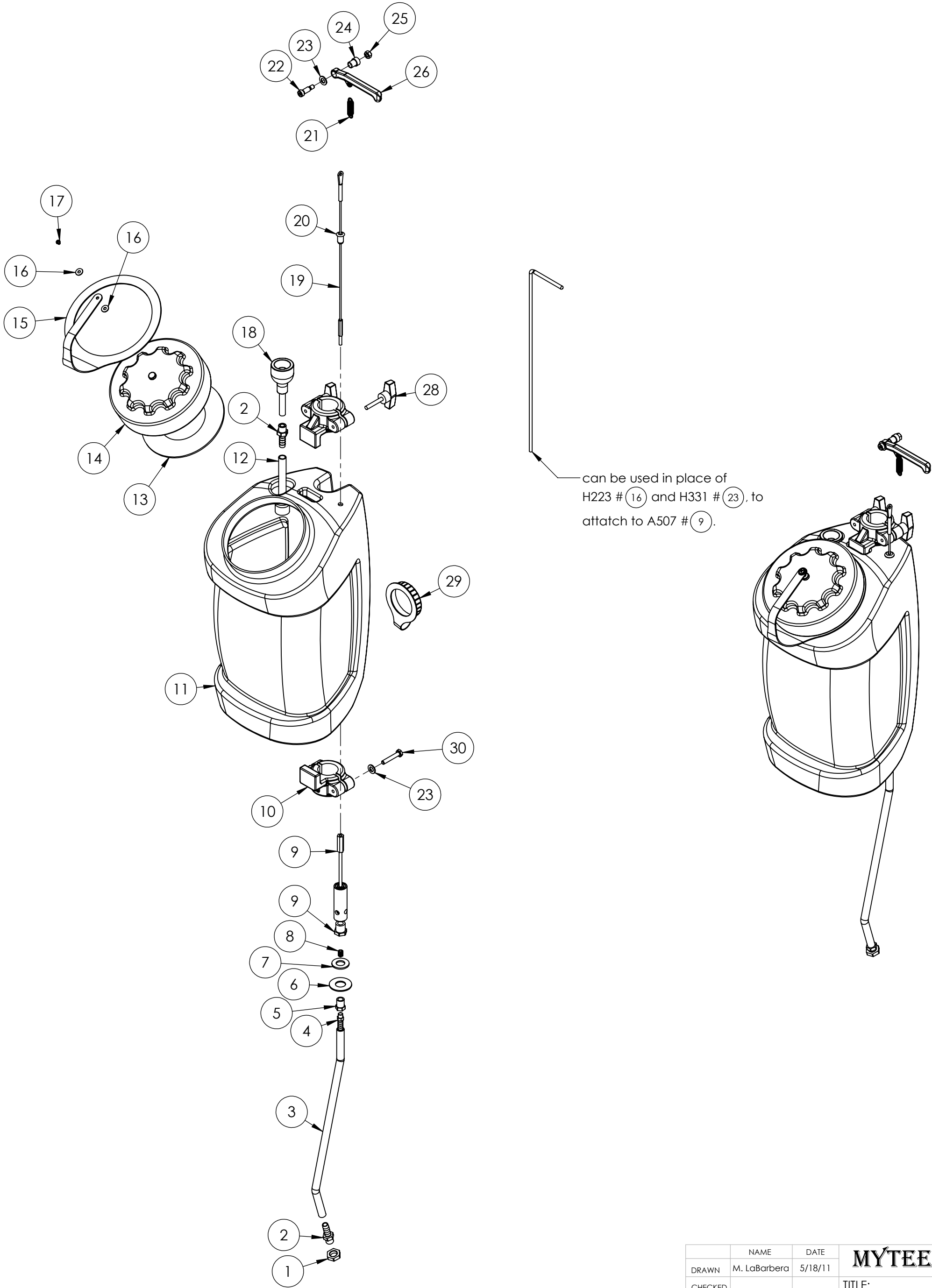


ITEM NO.	PART NO.	DESCRIPTION	QTY.
1	B156	nut, 1/4" npt	1
2	B241	adapter, brass, 3/8" barb x 1/4"mpt	2
3	PH612-24	tubing, PVC, 1/2" OD x 3/8" ID	1
4	B195	barb, 3/8" barb x 1/8" mpt	1
5	B104	bushing, brass, 1/4" mpt x 1/8" f	1
6	H299	washer, 11/16"i.d x 1-1/2"od x .075, s/s	1
7	H212	flat washer, 9/16"ID x 1 1/16"OD, AN960-C916	1
8	B663A	insert, knurled, 10/32 short	1
9	A507	valve, shampoo tank & handle rod	1
10	H915	clamp, shampoo tank	1
11	P559	replacement tank, ST-4	1
12	PH715-36	sol hose, 3/8", silicone braided, clear	1
13	G031	gasket, 3.25" i.d. x 5.88" o.d.	1
14	P560	cap, 6", threaded	1
15	G055	tether, cap, 6 1/2"	1
16	H612	Washer, #8, flat regular	2
17	H274	screw, 6 x 3/16, phil pan head, self-tapping	1
18	H178	faucet fill	1
19	H223	cable, 15.5" long, 10-32 thrd x swivel ring	1
20	P573	tube, nylon support - 3/8"	1
21	H002	spring, shampoo tank cable	1
22	H149	bolt, 5/16" shldr x 5/8" w/ 1/4-20 thrd	1
23	H148	washer, 5/16", narrow	3
24	P529	spacer, lever, handle adj.	1
25	H215	nut, hex, 1/4-20 s/s	1
26	H331	lever, shampoo tank	1
27	H245	rod, universal, shampoo tank	1
28	H357	thumb screw, 1/4" - 20, shampoo tank	2
29	G036	cap, 2.5" threaded, tethered	1
30	H316	bolt, 1/4-20 x 1-1/2" hex head, s/s	2

ITEMS NOT SHOWN

PART NO.	DESCRIPTION	QTY.
ADM-ST4	manual, shampoo tank	1
H316	bolt, 1/4-20 x 1-1/2" hex head, s/s	2
H210	washer, 1/4" flat, s/s	2
P573	Nylon Tube Expander For RD-13 Models Only	1



	NAME	DATE	MYTEE PRODUCTS, INC.	
DRAWN	M. LaBarbera	5/18/11	858-679-1191	
CHECKED			TITLE:	
PROPRIETARY AND CONFIDENTIAL THE INFORMATION CONTAINED IN THIS DRAWING IS THE SOLE PROPERTY OF MYTEE PRODUCTS, INC. ANY REPRODUCTION IN PART OR AS A WHOLE WITHOUT THE WRITTEN PERMISSION OF MYTEE PRODUCTS, INC. IS PROHIBITED.			shampoo tank	
			SIZE	DWG. NO.
			C	ST-4
			SCALE: 1:6	REV OD
			DO NOT SCALE DRAWING	SHEET 1 OF 1